



SharpView RDST-ECO

Rapid Deployment Security Tower
Zero Carbon CCTV Security Solution

SharpView's state-of-the-art CCTV Rapid Deployment Security Tower is the ideal solution for providing maximum protection of high value assets on critical national infrastructure, transport network, building sites or any application where power and communications are unavailable. RDST-ECO is a reliable alternative to manned guarding.

Features:

- Complete CCTV security system
- Wireless 4G transmission
- Intelligent video motion detection
- Audio warnings and guard challenges
- Alarm notification to monitoring centre
- Powered 9m hydraulic tower erection
- Built-in, zero emission power source
- Certified for UK and EU road transport

SharpView's **Rapid Deployment Tower (RDST)** has been developed using the latest proven technology from SharpView Ltd that solves the challenges of providing **maximum security at unmanned locations**. The rugged design has been certified for EU and UK road transport and there are **zero carbon emissions** making this the cleanest system of it's kind in the market.

From arrival, the unit can be deployed and provide live CCTV access within a few minutes. Intelligent motion detection triggers provide **instant alarm notifications and video evidence** during a break-in over the 4G mobile network. Licensed SIA security personnel at our approved **Alarm Receiving Centre** can challenge the unwanted miscreants and take necessary further action where necessary.

The system operates continuously 24/7 all year round and **eliminates the cost of manned guarding**.



Applications:

- Utilities, critical infrastructure
- Roadworks, traffic management
- Construction sites
- Public gatherings and events
- Border and perimeter security
- Transport infrastructure



SharpView RDST-ECO

Rapid Deployment Security Tower
Zero Carbon CCTV Security Solution

RDST-ECO is fitted with multi-megapixel vandal proof cameras that use **advanced video analytic algorithms** to generate alarms relating to potential threats. This **minimises nuisance alarms**. Trained monitoring staff at the Alarm Receiving Centre can issue **warnings over the horn speaker** and take necessary action whilst keeping an eye on activity live on site over the 4G connection. Super high resolution **4MP video evidence** is stored typically for 30 days which can be extended.



So easy to transport via tow bar or on a hiab lorry, once on location simply extend the legs for extra stability and mount the pre-configured CCTV onto the mast head. The power connection is made and the **electrically operated hydraulic mast** is erected with a simple turn of the switch. **RDST** is the **easiest to deploy** system in the industry. The mast can be raised **up to 9m** providing an exceptional range of views.

RDST-ECO is powered via deep discharge cyclic duty Gel batteries which are charged by BOC Hymera fuel cell with **zero carbon emissions**. Green electrical energy is provided from the reaction of hydrogen and oxygen with water vapour as the only exhaust. There are **no nasty fumes** and the reaction is **silent** providing an excellent clean solution with **minimal environmental impact**. The supplied hydrogen bottles will power the system continually for over **30 days*** before refuelling.



RDST-ECO has been developed exclusively by **SharpView Limited** based in the UK. With extensive experience in securing high value assets and critical infrastructure this solution meets the challenges of today's increasing security threats.

RDST-ECO can be deployed with minimal notice and without any fuss, anywhere in the UK. RDST-ECO is also the ideal choice for integrating any perimeter intruder detection system to CCTV.



SharpView RDST-ECO

Rapid Deployment Security Tower
Zero Carbon CCTV Security Solution

Standard Configuration*

CCTV and Communications

Cameras	Four bullet style 4MP IP, 2.8-12mm varifocal lens, IP67, built-in Infra Red illumination to 50m
Recording	NVR with 30 days built in storage, audio I/O, triggered recording, full playback, IMMIX compatible
Detection	Tripwire, intrusion zones, intelligent algorithm recognises object type; human, animal or vehicle
Speaker	Amplified horn speaker 20W for announcements, live warnings and voice challenges
Router	Dual SIM 4G/3G failover, WiFi, wired Ethernet, advanced firewall, 128-bit WEP, WPA2
Antenna	Omni-directional MiMo, 6.5dBi

Trailer

Construction	Fully galvanised steel chassis, moulded base, fibre-glass body
Stability	Extended stabilising and fully adjustable levelling legs
Safety	TCP AMOSS Automated Mast Operated Safety System, mechanical failsafe brake
Length	2500mm
Width	1345mm
Height	2150mm (mast retracted)
Weight	750kg (unladen)
Mast	Fully Hydraulic, extendable to 9m

Power System

Fuel	High Purity Hydrogen (99.95%)
Converter	Proton Exchange Membrane (PEM) fuel cell
Capacity	2 cylinders; each 20 litres @ 300 bar (option up to 8 cylinders)
Backup	Deep discharge cyclic duty gel batteries
Output	12VDC
Compliance	Section 61 environmental. Zero carbon, zero NOx emission at point of use

** System specification subject to change, please confirm at time of ordering.*

Designed by SharpView Limited for critical security protection, this standard configuration can be deployed with alternative camera technologies and additional security devices, sensors and software. Contact us for specific applications and any challenges you have securing high value assets and sites.





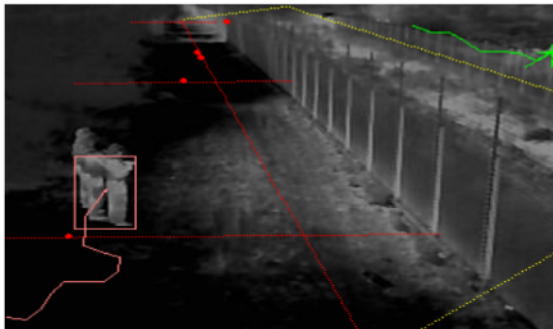
SharpView RDST-ECO

Rapid Deployment Security Tower
Zero Carbon CCTV Security Solution

Optional items

Cameras

Night Vision Thermal Imaging

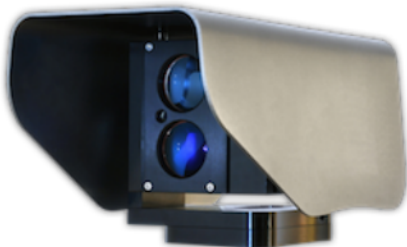


Pan-Tilt-Zoom PTZ



Detectors

Laser Beams - 500m detection



Passive Infra Red sensors



Power source

Photovoltaic Solar Panel charging



IEC60309 plug 110Vac or 240Vac

